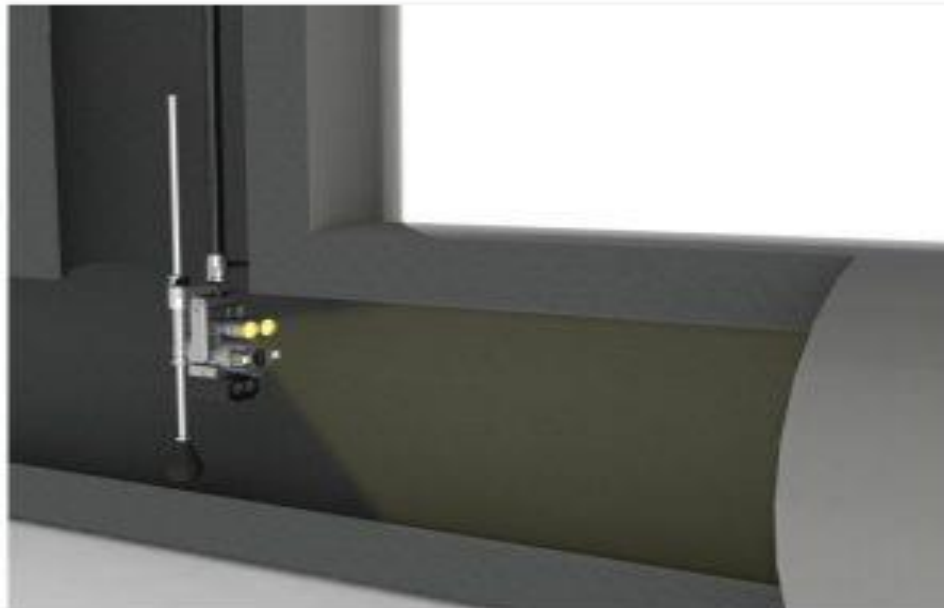


Manhole Inspection Camera

General information about Auto Tilt Manhole Inspection Camera Professional Tank CCTV Inspection Camera AD-M2106E

Application:

- ✓ Portable, wide-angle zoom camera, single operator
- ✓ Camera zoom: 432:1(36:1 optical, 12:1 digital) zoom, automatic/manual focus
- ✓ Motorising camera tilt: up 75°; down 75°
- ✓ Adjustable Super Bright LED Illumination
- ✓ Laser distance measuring
- ✓ Waterproof (IP68)
- ✓ Still Images (MPEG) and Video (AVI) Recording
- ✓ 6m Telescopic Rod
- ✓ 560 TVL Horizontal Resolution
- ✓ 1/4 CCD Camera Sensor
- ✓ 5.6" TFT Monitor
- ✓ Battery continuous working time:4.5 hours
- ✓ Detection Distance: up to 120m
- ✓ For the pipes diameter from 100mm to 2000mm(4" to 80")



Feature:

AD-M2106E Pole Zoom Camera with zoom feature is an affordable version of our system but still featuring all the outstanding characteristics of this rugged and reliable camera ideal for a wide range of vertical structure inspections.

Equipped with patented LED light technology that provides superb illumination regardless of the lighting conditions and a CCD camera sensor, this camera greatly increases the detection distance up to 120m and allows for capturing clear and bright images of very remote objects and areas.

Operators can tilt the camera up and down and use powerful 432:1(36:1 optical, 12:1 digital) zoom to examine the area of interest in great detail and capture every little defect or obstruction.

The inspection pole camera is equipped with a 5.6" TFT color monitor and a DVR that allows to record inspections as still images in MPEG format or videos in AVI format that can then be saved to an SD memory card.

The equipment is packed in a portable, rugged storage case.

This camera can be used in wet conditions, as it is waterproof and tightly sealed against water intrusion.

It comes with 2 standard super adjustable lights, yet durable, telescopic carbon pole but is available with pole up to 6 m long.

The camera head is connected to an adjustable mount that you can press against the ground to avoid image fluctuating.

The system runs on a rechargeable battery, allowing for up to 4.5 hours of uninterrupted inspections at full intensity.

The pole zoom camera is ideal for quick, well-rounded inspections of various vertical (up and down) assets, e.g.

ceilings, silo towers, stormwater culverts, mainlines, etc. where the use of complicated heavy-duty equipment would be excessive or unnecessary.



Technical specification of the device:

Camera:

- For the pipes diameter from 100mm to 2000mm(4'' to 80'')
- Working temperature:-20°C~50°C
- distance measuring:laser distance measuring, the accuracy:1cm
- Illumination:Highlight lights, light intensity up to 13000cp
- Image sensor: color 1/4'' CCD
- Camera zoom: 432:1(36:1 optical, 12:1 digital) zoom, automatic/manual focus
- Motorising camera tilt: up 75°; down 75°
- Sensitivity:Color mode: 0.1LUX, black and white mode: 0.01LUX
- Anti-fog:anti-fog lenses
- Waterproof: IP68

Control Unit:

- control: key for focusing, zooming, the control of the single lamp and the double lamps, record, photograph, playback, laser distance measuring, electricity indicator
- Battery: external battery, reducing the weight of the handheld, greatly reduce the work intensity. Working time: ≥4.5 hours
- Display: 5.6'' display
- Storage: 16G SD card, AVI video format
- Interface: Integrated video input / output, power supply input, cable interface, voice interface

Telescopic pole:

- Material: carbon fiber
- Nested telescopic design, cable interior design, strong fixed joint
- 1.2m * 5 telescopic pole.
- Support rod with a spring damping means, the end of the rod is a rubber ball, which can effectively anti-shake, increase the stability of the image

Cable:

- Enhanced multi-core cables, one time compression molding
- 10m standard cable, or as your requirement

