



Feature Function

- Large 7" TFT LCD (800 * 480)
- Snap shot and Audio / Video recording (640 * 480)
- LED brightness adjustment
- 5X Zoom in, Mirror image and Image rotation
- USB to PC connection
- Long duty hour up to 6 hrs
- AV OUT



Standard Accessories



Large 7" TFT LCD Display (800 * 480 pixel)

Embedded with 7" TFT LCD Monitor provides superior image quality photos for inspector to see.



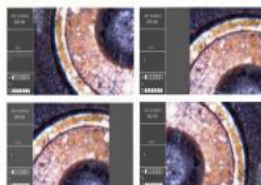
Mirror Image

Support mirror image to correct the direction of probe.



Screen Image Rotation Ability

Features image rotation allowing user to turn image into four directions 90°, 180°, 270° and 360°. No need to rotate camera probe anymore.



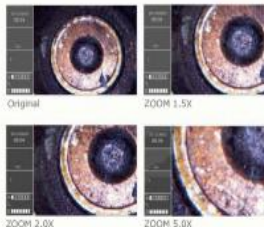
Measure Software Kit (Optional)

Inspection Management Software is designed for image viewing, distance measuring, and image comparison. It helps inspectors to verify measurement after leaving the inspection site.



Three stages 5.0X Zoom - In

Support 1.5X, 2.0X, 5.0X digital zoom.



Application

- Automobiles • Aircrafts • Ships • Railways • Welding • Architecture
- Mechanical equipment • Generators • Electricity • Manufacture
- General equipment • Gas, petroleum, and chemicals
- Defense, security, and surveillance
- Exploration, education, and research and experiments.



Video Output

Recorded video & images can be displayed directly to a TV screen for large screen viewing. Support * PAL / * NTSC * video system.



Live View Software

Live view software with snap-shot, video recording and playback function.



USB Connection

JK Series is capable to transfer captured images and view from PC. Support Windows 2000™ or later version. No specific software is required to playback the JPG and ASF files.

Light and Handy

Weighing just 1.18kg with Hand strap and Neck strap allows users to more easily use.



Main Console System (Display)	
Display	7" TFT LCD (800 x 480)
Image Storage Format	640 * 480, JPEG
Video Recording Format	640 * 480, MPEG4 (with audio)
Storage	8 GB SD card (up to 32 GB)
USB	Live view mode (optional software) Mass storage mode
Interface	USB 2.0 / AV Out
Audio Input / Output	Built-in microphone / Headphone Jack
Brightness Adjust	10 levels
WaterProof	IP57 standard
Drop test	1 meter
Working temperature	-10 ~ 60°C
Storage temperature	-20 ~ 80°C
Battery	Built-in Li-polymer Battery 6 hours capacity / 3 hours charge to full
Languages	27 Languages: English / French / German / Italian / Spanish / Portuguese / Japanese / Traditional Chinese / Simplified Chinese / Danish / Dutch / Polish / Russian / Bulgarian / Turkish / Swedish / Finnish / Norwegian / Estonian / Lithuanian / Latvian / Hungarian / Czech / Slovak / Slovenian / Romanian / Greek
Dimension	240 * 154 * 47mm
Weight	1.18 kg (2.6 lb)

Insertion Probe Options

Probe	Material	Probe Diameter	Tube Length	Detail
General Probe	Soft-Metal	Ø 5.5 mm	1m / 2m / 3m / 5m / 10m / 20m / 30m	P. 17 - 18
General Probe	Semi-Rigid	Ø 3.0 mm / Ø 5.5mm / Ø 8.5 mm	1m / 2m / 3m	P. 17 - 18
Dual-Camera Probe	Semi-Rigid	Ø 4.9 mm	1m / 2m / 3m	P. 19
2 Way Articulation	Soft-Metal	Ø 6.0 mm	1m / 2m / 3m	P. 20
2 Way Articulation (VGA)	Soft-Metal	Ø 6.0 mm	1m / 2m / 3m	P. 21 - 24
VGA Probe	Soft-Metal	Ø 5.5 mm	1m / 2m / 3m / 5m	P. 22 - 24
VGA Probe	Semi-Rigid	Ø 5.5 mm	1m / 3m	P. 22 - 24
VGA Probe (Near Focus)	Soft-Metal	Ø 5.5 mm	1m / 3m	P. 22 - 24
VGA Probe (Near Focus)	Semi-Rigid	Ø 5.5 mm	1m	P. 22 - 24
Pipe Inspection Probe	Hard Soft-Metal	Ø 6.0 mm, Ø 22 mm (camera head) Ø 6.0 mm, Ø 28 mm (camera head)	22m 5m / 10m / 22m / 30m	P. 25 - 28



Ø 3.9 mm Probe
Front view / Side view
(Semi-rigid)
1m / 2m / 3m

Ø 5.5 mm Probe
(Semi-Rigid)
1m / 2m / 3m

Ø 5.5 mm Probe
Front view / Side view
(Soft-Metal)
1m / 2m / 3m / 5m / 10m / 20m / 30m

Ø 8.5 mm Probe
(Semi-Rigid)
1m / 2m / 3m

3.9 mm Extremely Small

It's the smallest diameter Insert Probe on the market, only Ø3.9mm.

Front / Side View optional

You can select the corresponding camera in accordance with the circumstances you need.
Only for Ø3.9mm, Ø5.5mm

Insertion tube & Camera System			
Diameter	Ø 3.9 mm <i>Extremely small</i>	Ø 5.5 mm	Ø 8.5 mm
Material	Semi-Rigid (SR)	Soft-Metal (SM) Semi-Rigid (SR)	Semi-Rigid (SR)
Type of Camera	Front / Side view	SM: Front / Side view SR: Side view	Front view
Length	1m / 2m / 3m	SM: 1m / 2m / 3m / 5m / 10m / 20m / 30m SR: 1m / 3m / 3m	1m / 2m / 3m
Light Source	Front view: White LED * 3 Side view: White LED * 2	Front / Side view White LED * 4	White LED * 6
F.O.V	57°		
D.O.F	1 – 6 cm		
Frame Rate	~ 30 fps		
Exposure	Automatic		
White Balance	Fixed		
Resolution Pixels (Dynamic / Static)	QVGA (320 * 240)		
Image Sensor	CMOS Image Sensor		
Main Console	JF Series, JK Series, JL Series, JM Series		

One Click Switch

Forward View / Side View - One-click Switch

2 Way Articulation Wireless Probe
(Front View / Side View)
1m / 2m / 3m

2 Way Articulation
(Front View / Side View)
1m / 2m / 3m

Dual Cameras Probe (Semi-Rigid)
1m / 2m / 3m

Insertion tube & Camera System	
Diameter	Ø 4.9 mm
Type of Camera	Dual Cameras (Front & Side view)
Camera Resolution	320 * 240
Head Length	28 mm
Head Material	Stainless steel
Connector	Metal
Light Indicate	Green light (forward view), Red light (side view)
Light Source	Forward: 140-224 mc²LED Side: 210-330 mc²LED
Length	1m / 2m / 3m
Material	Semi-Rigid
F.O.V	Horizontal field angle 45.2° Vertical field angle 34° Diagonal field angle 56°
D.O.F	1 – 6 cm
Working Temperature	0°C – 53°C
Waterproof	IP67
Main Console	JF Series, JK Series, JL Series, JM Series

Insertion tube & Camera System		
	2 Way Articulation Wireless Probe	2 Way Articulation Wired Probe
Type of Probe	Wireless	Wired
Type of Camera	Front view / Side view	
Diameter	Ø 6 mm	
Resolution	325H * 250V	
Head Material	Stainless steel	
Light Source	White LED	
Length	1m / 2m / 3m	
F.O.V	Horizontal field angle 45.2° Vertical field angle 34° Diagonal field angle 56°	
D.O.F	1 – 6 cm	
Material	Soft-Metal	
Working Temperature	0°C – 60°C	
Articulation Angle	Left: 155° / Right: 155°	
Articulation Radius	Front View: 48 +/- 1mm / Side View: 60 +/- 1mm	
Waterproof	IP67	
Dimension	139.3 * 34.9 * 31.8mm	
Weight	1m-200g / 2m-340g / 3m-430g	1m-370g / 2m-400g / 3m-530g
Battery	Rechargeable Li-Polymer battery 3.7V	None
Lightness Control	Variable	None
Main Console	JM Series	JF Series, JK Series, JL Series, JM Series



2 Way Articulation Probe



2 Way Articulation Wireless Probe (VGA)
1m / 2m / 3m



2 Way Articulation Probe (VGA)
1m / 2m / 3m

2 WAY ARTICULATION

2 way articulation probe helping to check angles that hardly can be checked easily (over 300° of view).



Left / Right 155°



JM Series



JK Series



JF Series

Insertion tube & Camera System		
	2 Way Articulation Wireless Probe(VGA)	2 Way Articulation Probe(VGA)
Type of Probe	Wireless	Wired
Type of Camera		Front view
Diameter		Ø 6mm
Resolution		VGA (640 x 480)
Head Material		Stainless steel
Light Source		White LED, 224nmol * 3 LED
Length		1m / 2m / 3m
FOV		87.1 degree (Diagonal)
D.O.F		1 - 10 cm
Material		Soft-Metal
Working Temperature		-20 - 65 °C
Articulation Angle		Left: 155° / Right: 155°
Articulation Radius		50mm ± 1.5mm
Waterproof		IP67
Dimension		139.3 * 34.9 * 31.8mm
Weight		220g
Battery	Rechargeable Li-Polymer battery 3.7V	None
Lightness Control	Variable	None
Main Console	JM Series	JF Series, JM Series, JK Series

Basic / Near Focus



Ø 5.5 mm VGA Probe (Soft-Metal / Semi-Rigid)
SM: 1m / 2m / 3m / 5m
SR: 1m / 3m

Insertion tube & Camera System	
Diameter	Ø 5.5 mm
Camera Head Length	20mm
Material	Soft-Metal (SM) / Semi-Rigid (SR)
Length	SM: 1m / 2m / 3m / 5m SR: 1m / 3m
Head Material	Stainless steel
Resolution	VGA (640 x 480)
Light Source	White LED, 224nmol * 4 LED
D.O.F	1 - 6cm
FOV	60.7 degree (Diagonal)
Working Temperature	-25°C - 65°C
Waterproof	IP67
Video Out Format	NTSC
Main Console	JF Series, JM Series, JK Series

MATERIAL OF PROBE

Soft-Metal: Soft bendable end resistant.
Semi-Rigid: Bendable and can be in fixed position.



Ø 5.5 mm VGA Near-Focus Probe (Soft-Metal / Semi-Rigid)
SM: 1m / 3m
SR: 1m

Near Focus

Near Focus / Short Focus Probe is suitable for a narrow working environment (e.g., gun barrel, tiny tube) or inspectors who would like to scrutinize a specific part in a short distance. You can obtain more detail image by this probe than observe by a normal focus probe.



General Probe

General Probe

General Probe



Near Focus Probe

Near Focus Probe

Near Focus Probe



Insertion tube & Camera System	
Diameter	Ø 5.5 mm
Camera Head Length	20mm
Material	Soft-Metal (SM) / Semi-Rigid (SR)
Length	SM: 1m / 3m SR: 1m
Head Material	Stainless steel
Resolution	VGA (640 x 480)
Light Source	White LED, 224nmol * 4 LED
D.O.F	6 - 16mm (0.6cm - 1.6cm)
FOV	60.7 degree (Diagonal)
Working Temperature	-20°C - 65°C
Waterproof	IP67
Video Out Format	NTSC
Main Console	JF Series, JK Series, JM Series

Hyperion® Function

Hyperion, can further enhance the articulation probe with:

- Clearer images on monitor (640 x 480 resolution)
- Brighter images in low-light conditions
- Anti-reflection and particle-free view on metal or mirror surface
- 90° view rotations during inspection



BRIGHTER IMAGE

Light enhancement under low - light condition.



ROTATION IMAGE

Four 90° view rotation to identify codes.



ANTI-REFLECTION

Reduce reflection on metal or mirror surface.



PARTICLE-FREE

To eliminate the dust on the mirror without wipe.



VGA Series Probe



Ø 6.0 mm 2 Way Articulation Wireless Probe (VGA)

Ø 6.0 mm 2 Way Articulation Probe (VGA)

Ø 5.5 mm VGA Probe

Ø 5.5 mm VGA Probe (Near Focus)





- 18mm Ø
- 22mm Ø
- IP 68
- IP 65
- IP 68
- IP 65

Ø 22 mm / Ø 28 mm
22 m / 30 m

Rock solid reel stand not only improves the image quality, but also provides the convenience and flexibility for your pipe inspection.

Ø 28 mm
5 m / 10 m

Pass through two 90° elbow bends



Recommended Combinations



Camera Head

- Interchangeable Camera Head • IP 68 Waterproof
- Bright & Clear Image • 640*480 Resolution • Stainless Steel
- 8 High Brightness LED (3000 lux)



Wireless Detection

Power of the Locator transmitter can detection tube probe position better let the smooth operation.



Optional Accessories

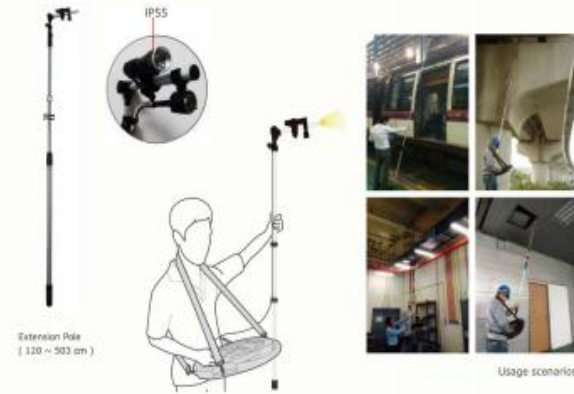


Locator	
Diameter	L: 292.5mm W: 148mm H: 485.5mm
Weight	3kg
Power Source	3.7V / 200mAh Li battery
Power Consumption	282mA
Battery Charge	3 ~ 4 hours
Power Cycle	6 ~ 7 hours
Power Adaptor	5.5V, 1.8A
Working Temperature	-10° ~ 60°
Storage Temperature	-20° ~ 80°
Drop Resistance	60cm
Waterproof	IP55
Available	Ø 28mm Length 22m Only

Optional Accessories

Extension Pole

No climbing and no ladder. Ideal for inspections that to access like ceiling, air-condition duct, bridge, tunnel, sewage... facilities.



Extension Pole
(120 ~ 503 cm)

Usage scenarios

• Highly convenient for operation in heavy duty
• Up to 5m inspection

Extension Pole	
Length	120 ~ 503 cm (main pole only)
Weight	1275g (w/o flashlight)
Probe Holding Pole	Angle adjustable
Flashlight	IP 55



Meter	
Screen display	LCD
Switches	Power / Reset m/f counter Backlight
Dimension	62 x 110 x 24mm
Meter counts	Forward / Reverse
Display digits	3 (1 decimal place)
Meter display	m/f
Deviation	± 0.4% ± 1.3%
Waterproof	IP 55
Power source	2 x AAA (DC 3V)
Power capacity	≥ 90hrs

Insertion tube & Camera System		
Camera Diameter	Ø 22 mm	Ø 28 mm
Pipe Diameter		Ø 6 mm
Camera Length	25mm	34.3mm
Applicable Pipe	Ø40mm-70mm	Ø50mm-100mm
Goose neck		27cm
Pipe Length	22m	5m / 10m / 22m / 30m optional
Interchangeable Head	NO	Length 22m Only
Meter	YES	YES (non 5m / 10m)
Resolution	640*480	
Camera Material	Stainless Steel	
D.O.F	30mm - 100mm	10mm - ∞
F.O.V	62.5°(Diagonal)	150.8°(Diagonal)
Illumination	High Brightness 8 White Led (3000 lux)	
Waterproof	Probe-IP68, Reel-IP65	
Working Temperature	-10°C~60°C	
Operating Hour	3 Hours	
Material	Fiber Glass	
Flexibility	Continuously 90° sharp turn in Ø40mm / Ø50mm Water Pipe	
Whole Steel Diameter	30mm	
Main Console	JF Series, JK Series, JM Series	JF Series, JK Series, JL Series, JM Series Length: 5m/10m JF Series Only

